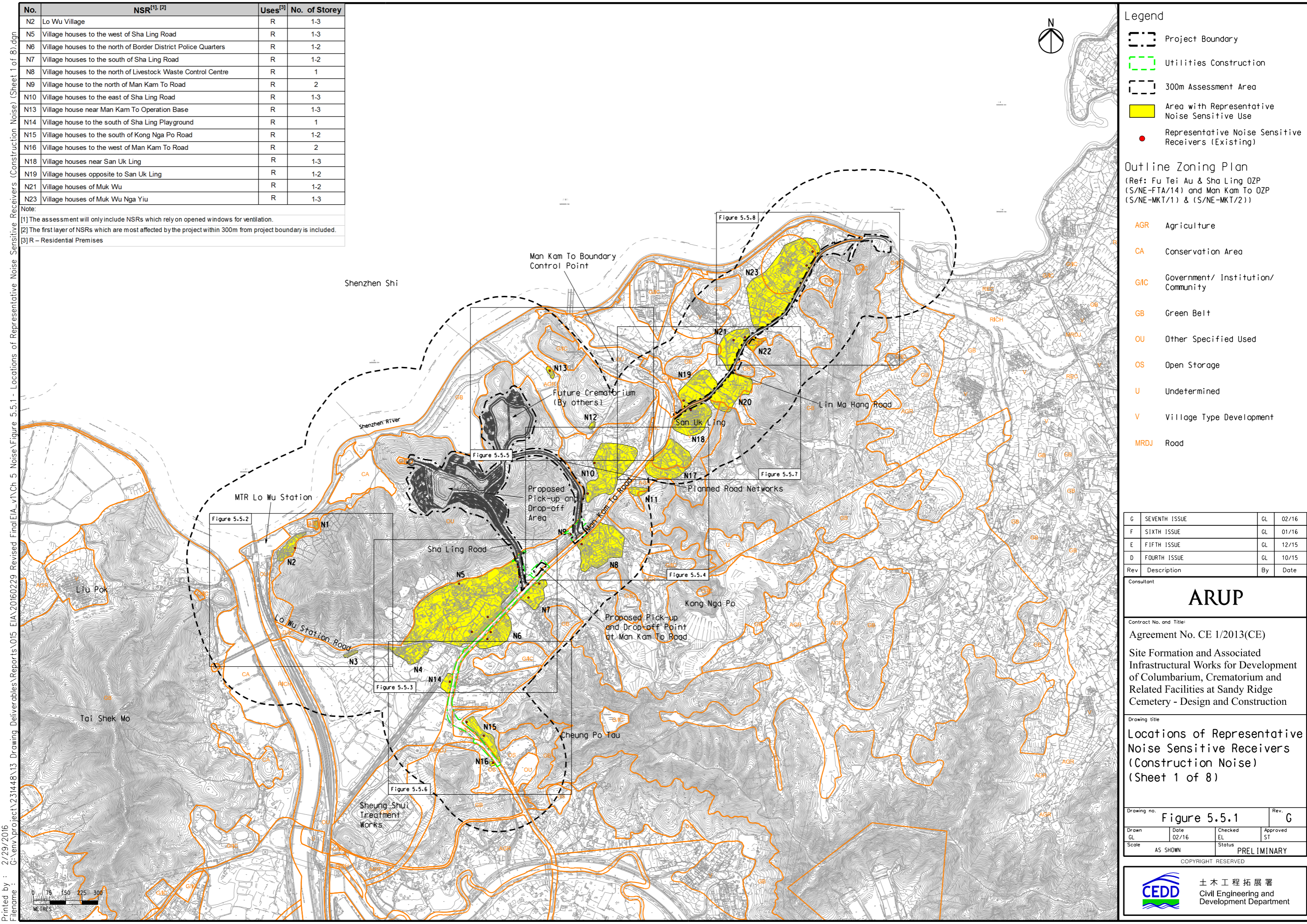


No.	NSR ^{[1], [2]}	Uses ^[3]	No. of Storey
N2	Lo Wu Village	R	1-3
N5	Village houses to the west of Sha Ling Road	R	1-3
N6	Village houses to the north of Border District Police Quarters	R	1-2
N7	Village houses to the south of Sha Ling Road	R	1-2
N8	Village houses to the north of Livestock Waste Control Centre	R	1
N9	Village house to the north of Man Kam To Road	R	2
N10	Village houses to the east of Sha Ling Road	R	1-3
N13	Village house near Man Kam To Operation Base	R	1-3
N14	Village house to the south of Sha Ling Playground	R	1
N15	Village houses to the south of Kong Nga Po Road	R	1-2
N16	Village houses to the west of Man Kam To Road	R	2
N18	Village houses near San Uk Ling	R	1-3
N19	Village houses opposite to San Uk Ling	R	1-2
N21	Village houses of Muk Wu	R	1-2
N23	Village houses of Muk Wu Nga Yiu	R	1-3

Note:
 [1] The assessment will only include NSRs which rely on opened windows for ventilation.
 [2] The first layer of NSRs which are most affected by the project within 300m from project boundary is included.
 [3] R – Residential Premises



Legend

- Project Boundary
- Utilities Construction
- 300m Assessment Area
- Area with Representative Noise Sensitive Use
- Representative Noise Sensitive Receivers (Existing)

Outline Zoning Plan
 (Ref: Fu Tei Au & Sha Ling OZP (S/NE-FTA/14) and Man Kam To OZP (S/NE-MKT/1) & (S/NE-MKT/2))

- Agriculture
- Conservation Area
- Government/ Institution/ Community
- Green Belt
- Other Specified Used
- Open Storage
- Undetermined
- Village Type Development
- Road

G	SEVENTH ISSUE	GL	02/16
F	SIXTH ISSUE	GL	01/16
E	FIFTH ISSUE	GL	12/15
D	FOURTH ISSUE	GL	10/15
Rev	Description	By	Date

Consultant
ARUP

Contract No. and Title:
 Agreement No. CE 1/2013(CE)
 Site Formation and Associated Infrastructural Works for Development of Columbarium, Crematorium and Related Facilities at Sandy Ridge Cemetery - Design and Construction

Drawing title
Locations of Representative Noise Sensitive Receivers (Construction Noise) (Sheet 1 of 8)

Drawing no. Figure 5.5.1		Rev. G	
Drawn	Date	Checked	Approved
GL	02/16	EL	ST
Scale	Status		
AS SHOWN	PRELIMINARY		

COPYRIGHT RESERVED

土木工程拓展署
 Civil Engineering and Development Department